

farnham maltings  
**Riverside Café Gallery**

**Introduction Pack**

About.....p2  
Past Exhibitions.....p3  
Riverside Floor Plan.....p4  
Installation Shots.....p5  
Exhibition Proposal Form.....p6

Farnham Maltings  
Bridge Square, Farnham  
Surrey, GU9 7QR

t 01252 745444  
f 01252 718177

[anna.garrett@farnhammaltings.com](mailto:anna.garrett@farnhammaltings.com)  
[www.farnhammaltings.com](http://www.farnhammaltings.com)

Charity No: 305034  
Registered in England No: 954753  
VAT Registration No: 224 8626 03

# About

The Riverside Café Gallery is based at creative organisation, the Farnham Maltings. Curated in the busy setting of the Riverside Café, exhibitions showcase artwork from local and national contemporary artists and makers. Usually programmed around a year in advance, the schedule consists of a combination of solo and group shows. This includes invited artists; artists selected after submitting an *Exhibition Proposal Form*; or specially curated exhibitions with a theme and/or coinciding with a festival or event held concurrently at Farnham Maltings.

The Riverside Café Gallery can usually hang around 12-18 pieces of work, depending on the size of the pieces. It is free of charge to have an exhibition in the space, however Farnham Maltings take a 30% (+VAT) commission on sales. All artwork sales are taken through the Box Office, and artists will be paid by the Farnham Maltings Finance Department via BACS, post exhibition.

The Riverside Café Gallery is a popular local venue, in high demand. Works need to be of a professional standard with a high quality finish, and artists must have a history of exhibiting. Submitted work may fit into a theme or group show coming up, in which case you may be invited to participate in a future group exhibition. Alternatively, your work might be added to a waiting list. Artists are also welcome to submit joint or group proposals, if the works are linked through concept, subject or medium.

If you are looking to exhibit your work at the Riverside Café Gallery, then please register interest by completing an *Exhibition Proposal Form*, sending it to [anna.garrett@farnhammaltings.com](mailto:anna.garrett@farnhammaltings.com). This will not guarantee you a show, and the Farnham Maltings will be in touch as to whether you have been successful or unsuccessful in your application.

# Past Exhibitions

Jonathan Thompson: [\*The Solent Way: A Printmaker's Progress\*](#)  
01 – 27 July 2016

Ciara O'Hara: [\*Place\*](#)  
28 May – 01 July 2016

Lucy Fiona Morrison: [\*Plains and Peaks\*](#)  
16 – 28 May 2016

James Wells: [\*Refracted Horizons\*](#)  
1 April – May 2016

[Maltings Young Portrait Artist Award](#)  
4 March – 1 April 2016

Knitwits/ Little Bulb Theatre: [\*The Night That Turned to Winter\*](#)  
17 February – 4 March 2016

Paul Smith: [\*Noise Rings\*](#)  
4 – 17 February 2016

Stuey B: [\*Local:Simple\*](#)  
4 December 2015– 15 January 2016

Anna Garrett: [\*glitter. garden. garbage.\*](#)  
27 November – 4 December 2015

Charlie Betts: [\*Series 2\*](#)  
30 October – 27 November 2015

Ann Davison: [\*North From Sutherland\*](#)  
2 – 30 October 2015

Heidi Rhodes and Eleanor Thomas: [\*The Gorgeous & The Grotesque\*](#)  
4 September – 2 October

[\*Salad Days: UCA Graduate Showcase\*](#)  
7 August – 4 September 2015

Joella Wheatley: [\*From this Corner to Another\*](#)  
30 June – 7 August 2015

XOANXO: [\*Farnham Times\*](#)  
01 May – 26 June 2015

Sue Colyer: [\*Contemporary Watercolours\*](#)  
01 April – 01 May 2015

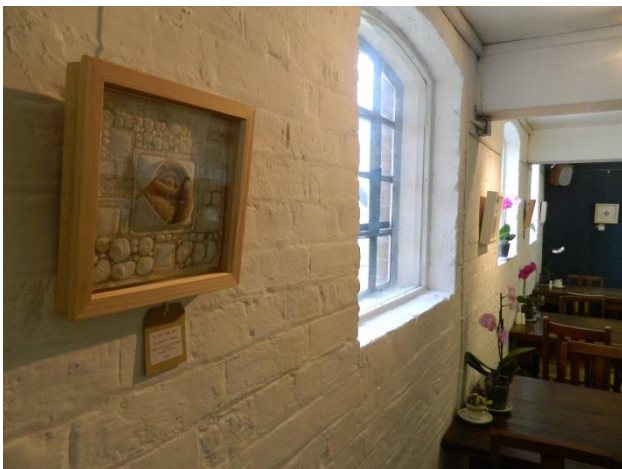
# Installation Shots



Charlie Betts – *Series 2*



UCA Graduate Showcase, Julia Keenan - *Salad Days*



Eleanor Thomas – *The Gorgeous & The Grotesque*



UCA Graduate Showcase, Naomi Cant-Barros – *Salad Days*



Sue Colyer- *Contemporary Watercolours*



Sue Colyer- *Contemporary Watercolours*

# Riverside Floor Plan

(Not to scale)

