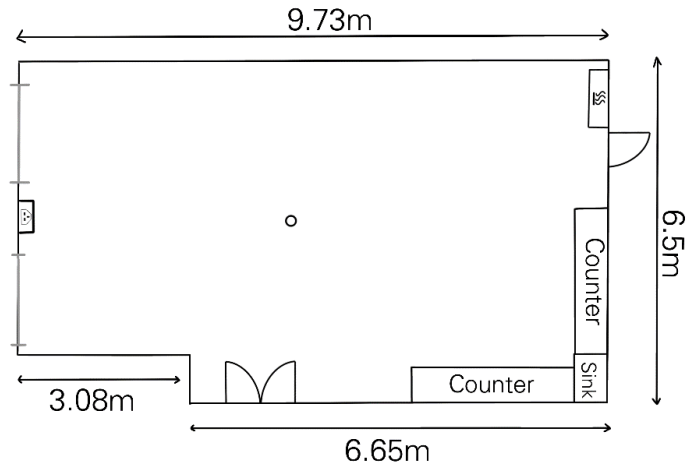


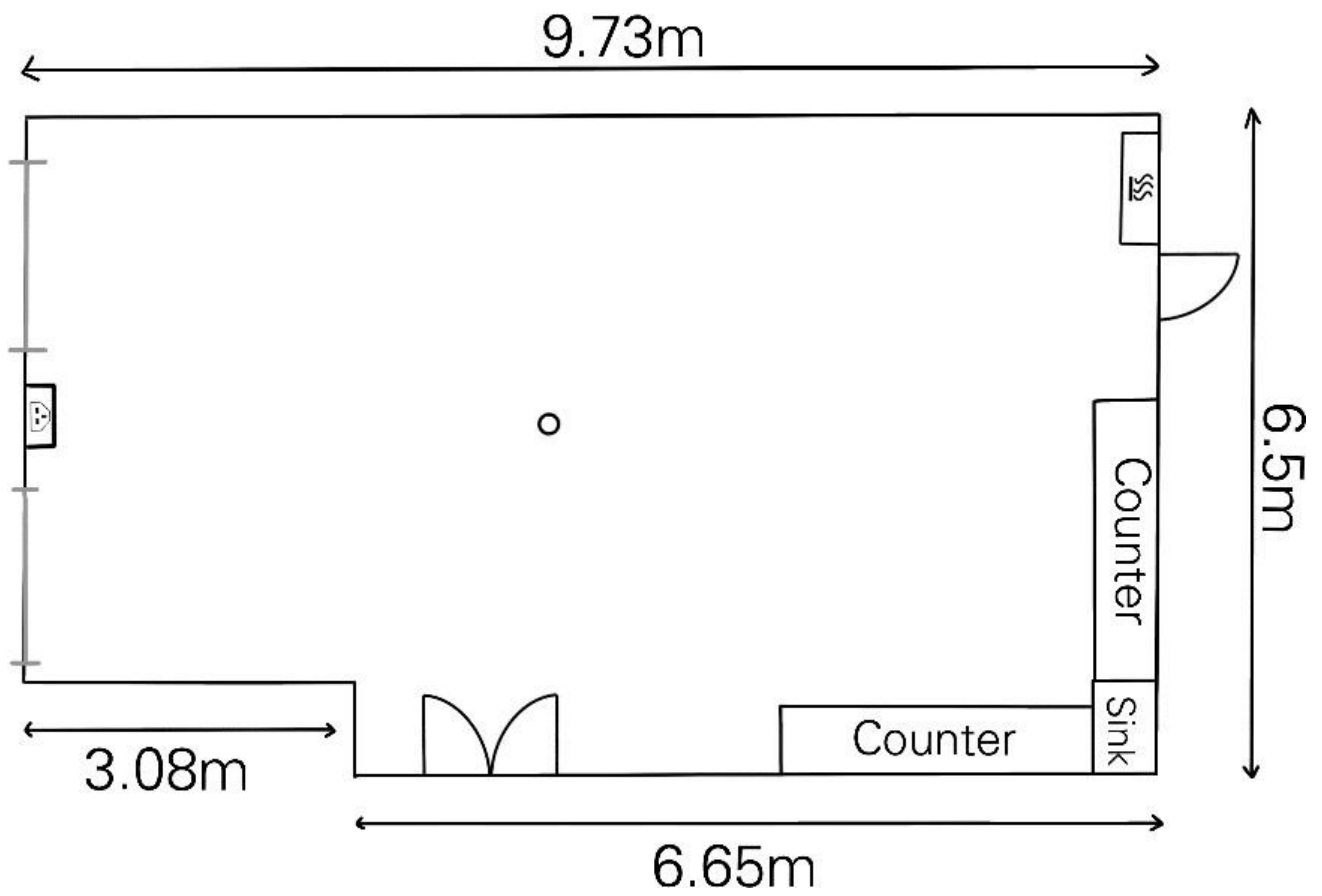
east wing workshop



The **East Wing Workshop** is a fully functional space with serene views of the River Wey. It is suitable for workshops, rehearsals and children's activities. The room features a large sink black out blinds and full level access. Toilets are conveniently located on the same corridor.

useful to know:

room length:	6.5m	room capacity:	20 seated
room width:	9.73m		20 workshop
daylight:	yes		
blackout:	yes		
power sockets:	4		
wheelchair access:	fully accessible		
other	sink, work counters		



-  Bar
-  Window
-  Plug Socket
-  Heater
-  Double Door
-  Door
-  Pillar
-  Fire Escape
-  Toilet