

farnham maltings

Visual Story



This pack aims to support children, young people and adults with autism, communication difficulties, other learning disabilities and those with English as a second language.

It can be used to help them access and understand their experience in the building.

Makaton symbols and images are used to help communicate the ideas.

Welcome to Farnham Maltings.

Farnham Maltings is a large building dedicated to creative events such as; theatre, music, craft, art, and film.



If you are visiting Farnham Maltings you might need a ticket for your event.

You might have bought it in advance or be buying it on the day.

You can buy your ticket at the Box Office desk. This is a picture of the box office at Farnham Maltings.

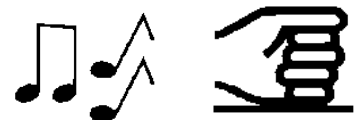


When you enter the room where your event is, a Steward will take your ticket from you. The Stewards all have badges so you know they work for Farnham Maltings. They will direct you to your seat and help you if you need it.



If at any time you feel uncomfortable because of crowds, noise or anything else, you can go and sit in the foyer on the seats or sofas.

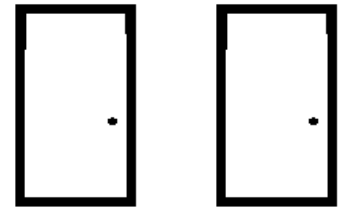
It might be quieter there. If you need help at any time you can ask the Box Office staff or a Steward.



Getting to Farnham Maltings:



When you arrive, you will come through two sets of automatic glass doors.



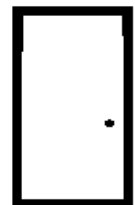
After the second set of automatic glass doors, you will see our foyer entrance hall. There might be a lot of people in the hall. You are safe.

It could be a bit loud, and you might hear music.



When you turn left through the **grey** doors, you will come to the foyer and box office.

Our foyer is big. It has wooden chairs and sofas, and also large round pillars.





The box office desk is in the foyer.

There will be someone behind the desk. They work for Farnham Maltings and can help if you have a question.

You might have to stand in a line with other people and wait your turn.



Opposite the box office desk is a board with all of the events at Farnham Maltings that day. You can find your event on the board.



On the left in the foyer there is a bar which is sometimes open.

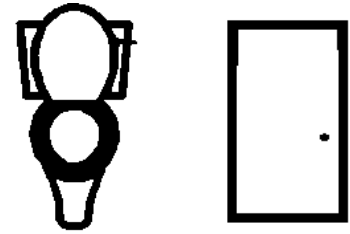
When it is open you can buy drinks, cakes, and cold food to eat.

This is a picture of the bar when it is open.





To get to the **toilets**, go through the grey doors on the left hand side in the foyer (underneath the clock).



There are three toilets in the hallway next to the foyer, male, female, and accessible to wheelchairs.

You can use them if you need to go to the toilet while you are at Farnham Maltings.



At the end of the corridor there is the Riverside Café.

There are different chairs and tables in the café. You might have to stand in a line with other people and wait your turn.

You might hear music.

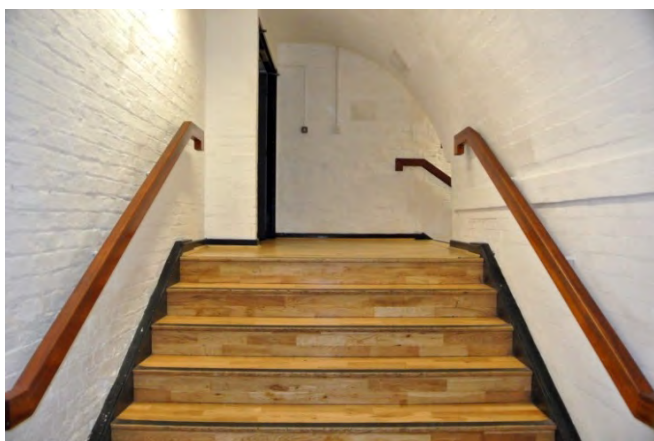


To attend an event in The Great Hall:

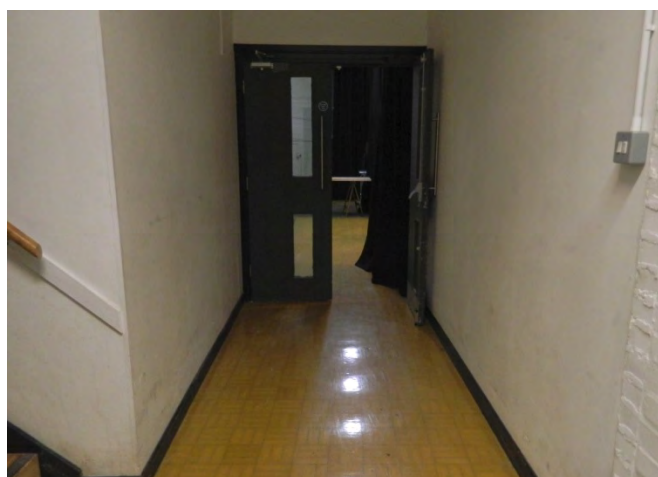
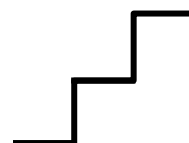


The Great Hall is the biggest room in Farnham Maltings.

To get to the Great Hall from the foyer, you will go through the grey double doors straight ahead on the right.

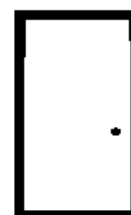


After the double doors, you will come to a staircase. Follow the stairs down and then turn right.



You will see a doorway across the room, on the far left, which leads to the Great Hall. The grey doors will be open.

There may be a lot of people and you might have to wait in a line to get in. You might hear music from the Great Hall. You can put your hands over your ears.





There will be lots of chairs, and a person will tell you where to sit when you walk in. They work for the theatre and can help you if you have a question.

The chairs in the Great Hall are **grey**. The music might be louder in the Great Hall. You can cover your ears if you want to.



The stage might look big with **black** curtains on either side.

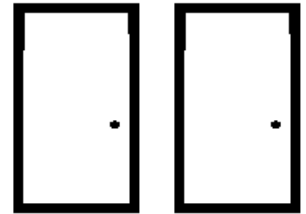
The stage might have people on it or furniture or instruments. It might have a big screen.

As well as the Great Hall, we have other rooms available. The Box Office staff can direct you to them.



How to get to The Cellar Bar

From the entrance foyer, go down the stairs and to the right. You can use either set of doors (which ever are open).



The Cellar is sometimes used for comedy performances. This is what it looks like for comedy performances.

It is a big room with a low ceiling and lots of pillars. There are lights on the ceiling too.



Sometimes you will hear music.



How to get to The Barley Room

From the entrance foyer, go up the stairs to the very top. The Barley Room is to the right.

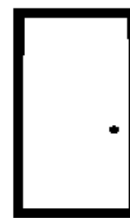
It is a big room with **dark brown** beams and pillars.



How to get to The Tindle Studio

From the entrance foyer, go up the first set of stairs and through the **grey** double doors facing you.

The Tindle Studio has wooden flooring and is sometimes covered in **black** curtains.



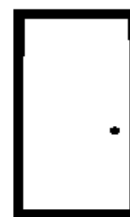
You may hear music. It could be busy.



How to get to The Tannery

The sign for this room says The Dance Studio.

From the entrance foyer, go up the stairs, first door on your right.



The room has a high ceiling, brick walls and wooden beams.



There are more rooms in Farnham Maltings called The Long Kiln Gallery, The South West Kiln, and The Courtyard Kiln.

To find these rooms you can ask the person behind the box office desk.

You might have to stand in a line with other people and wait your turn.



Here is a picture of the Long Kiln Gallery and The South West Kiln.

The Long Kiln Gallery



The South West Kiln



When you leave the building you might go back through the foyer.

The foyer could be very busy and there might be a lot of noise.

This is OK because everyone is just leaving. You can put your hands over your ears if you want to.

We hope that you had fun at Farnham Maltings.

You can tell us about it if you would like to.

When you get home you could write us a letter, draw a picture or email us.

Our address is:

Farnham Maltings

Bridge Square

Farnham

Surrey GU9 7QR

Our email address is:

info@farnhammaltings.com

We would like to hear from you.

Thank you for coming.